



GAT MONTHLY MEMBERSHIP PROGRESS REPORT

Results as of: 2/29/2024

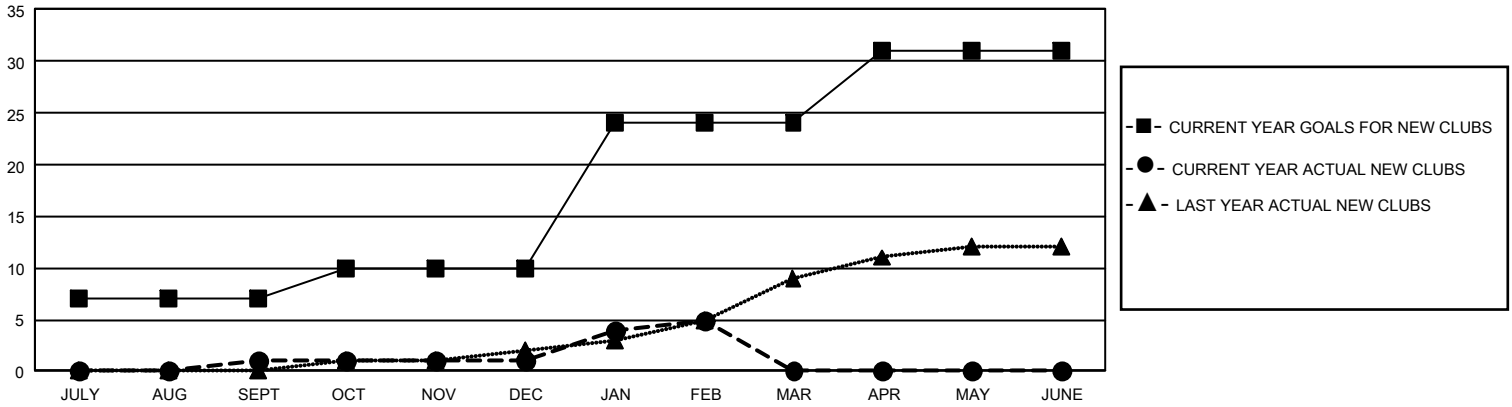
GMT Constitutional Area 5 - J, Group G

REPORT DOES NOT INCLUDE CLUBS IN UNDISTRICTED AREAS.

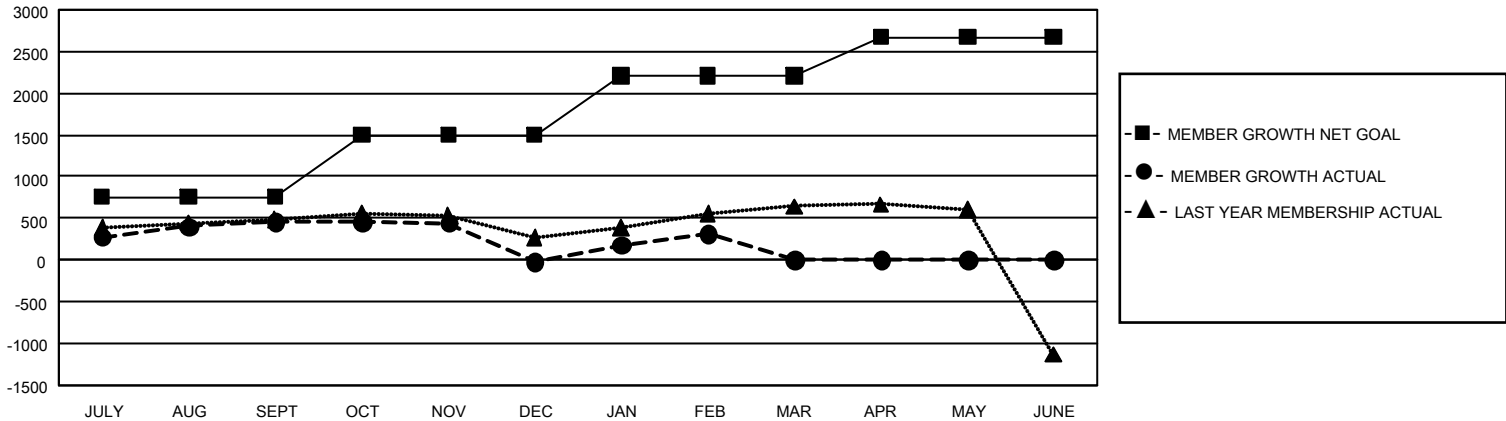
Clubs			
RESULTS FOR 2023-2024			
QUARTER	NEW CLUB GOAL	NEW CLUBS	DROPPED CLUBS
JULY/AUG/SEPT	21	1	0
OCT/NOV/DEC	9	0	4
JAN/FEB/MAR	42	4	2
APR/MAY/JUNE	21	0	0

Members			
RESULTS FOR 2023-2024			
QUARTER	MEMBER GROWTH NET GOAL	MEMBER GROWTH ACTUAL	DROPPED MEMBERS ACTUAL (including transfers)
JULY/AUG/SEPT	758	1,169	661
OCT/NOV/DEC	743	474	920
JAN/FEB/MAR	712	678	330
APR/MAY/JUNE	462	0	0

GOALS AND ACTUAL NEW CLUBS CUMULATIVE



GOALS AND ACTUAL MEMBERS CUMULATIVE



DROPPED CLUBS: 6	745 CLUBS OF 1,259 ADDED 1 OR MORE NEW MEMBERS	GENDER DISTRIBUTION	
		MALE 30,159 (76.62%) FEMALE 9,201 (23.38%) NON BINARY 0 (0.00%) PREFER NOT TO ANSWER 2 (0.01%)	
DROPPED MEMBERS		CLICK HERE FOR CUMULATIVE MEMBERSHIP DATA	TOTAL FAMILY UNIT MEMBERS 12,289
DECEASED 235 CLUB CANCELLED 0 OTHER 1,676 TOTAL 1,911	FAMILY MEMBERS PAYING HALF DUES 6,945		